

CONNEKT

SNEEZEGUARD COMPONENTS



OPERATOR-SERVE ENCLOSED FOOD SHIELD

GCC4C

All component parts CNC machined to exacting standards from 6000 Series aluminum.

Food shield, post assemblies and individual component kits are NSF/ANSI 2 listed.

Satin Clear Anodized Finish on all component parts and extrusions.

Glass Panel Recommendations

Top Shelf

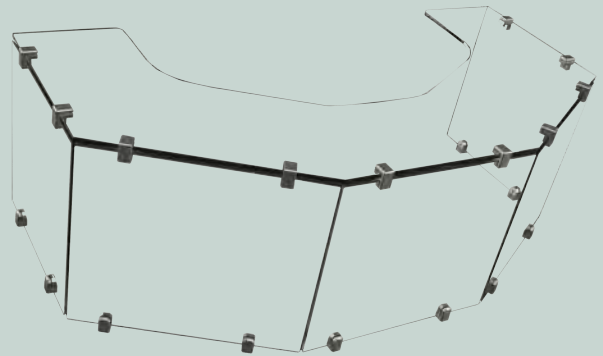
10MM Glass

- GC10161 and GC101101
 - 10mm (3/8") top flat tempered glass connection

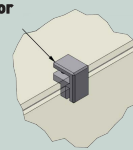
End/Side Panel

6MM Glass or 10MM Glass

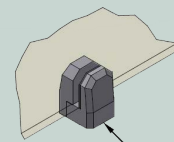
- GC10161
 - For 6mm (1/4") side
- GC101101
 - For 10mm (3/8") side
- GC506
 - 6mm tempered glass panels
- GC510
 - 10mm tempered glass panels



GC10161 or
GC101101



GC506 or GC510



Attachment Methods

- GC10161 and GC101101
 - Nylon tipped set screws
- GC506 and GC510
 - Surface mount w/ (1) #10 FH wood screw or #10 FH sheet metal screw
 - Bottom-mount w/ (1) 1/4"-20 machine stud

CONNEKT

SNEEZEGUARD COMPONENTS

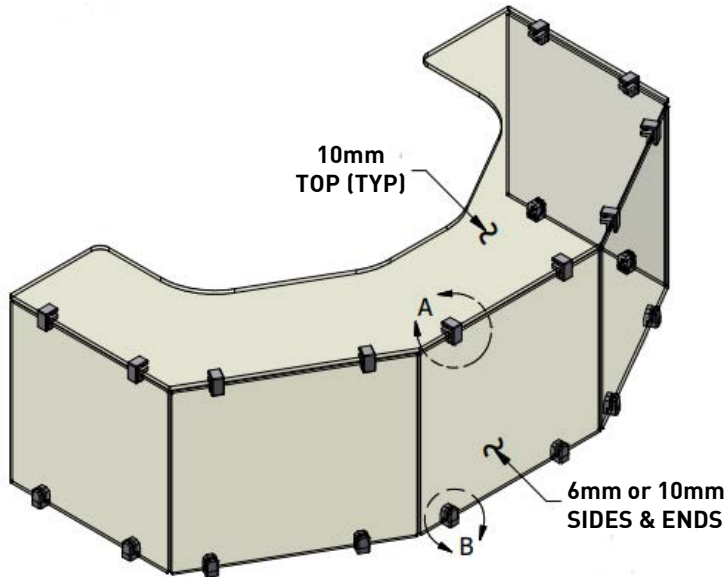
CONNEKT CLAMP CUT SHEET

GCC4C

SINGLE

BAY

Typical setup for a curved counter



Single Parts List

ITEM	QTY	PART NUMBER
A	10	GC10161 OR GC101101
B	10	GC506 OR GC510

In order to meet the NSF/ANSI 2 - 2018 requirements for food shields, all glass panels must be fully tempered and conform to the ANSI Z97.1 standard. To protect against chipping, exposed edges of glass should be protected by tight fitting channels, stripping materials, or other means such as rounding the edges of tempered glass.

Acrylic or Polycarbonate panels may be used in lieu of tempered glass and still meet the NSF/ANSI 2 - 2018 requirements.